

The King's CE School

Aspire, Believe and Achieve Together

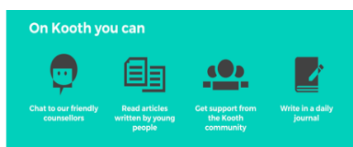


Newsletter 29 Friday 1st May 2020

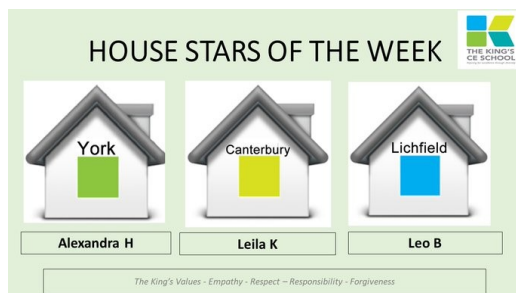
Stay in touch.... but be kind

During this time it is more important than ever to stay connected with friends and family. Many of us are using social media more, in fact some reports suggest that our social media use has increased by 87% since lockdown restrictions. Although Technology and social media can be a great way to stay in contact with those we love and care about, it is more important than ever that we are mindful of what we are posting and saying on line. Remember these three important points....

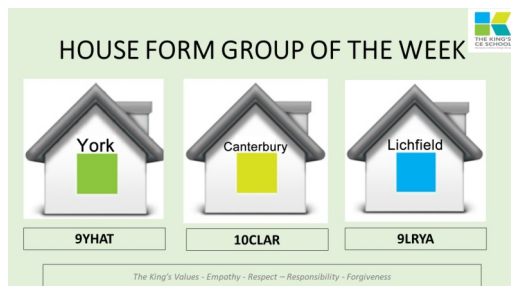
1. Consider who has access to what you are posting. If you are in a group chat talking about someone else to a friend, can that other person see it?
2. Remember that text has no intonation. Whilst what you are posting might be intended as a joke... does it read like this in 'black and white'?
3. Be kind!



Well Done to our House Stars of the Week.



Well done to our House Form Groups of the Week .



Contact Details

Telephone 01902 558333

Mr J Ludlow Principal

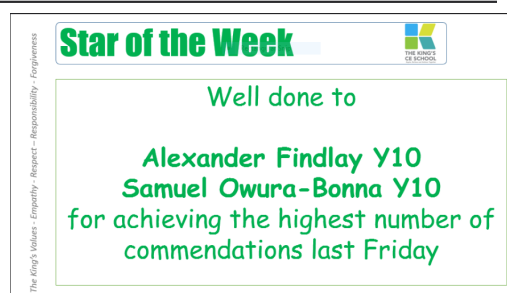
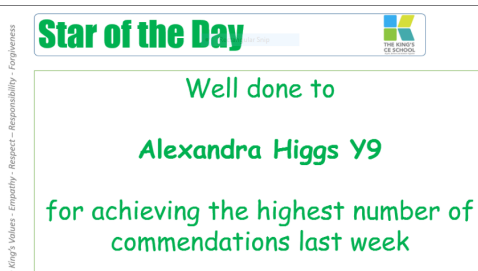
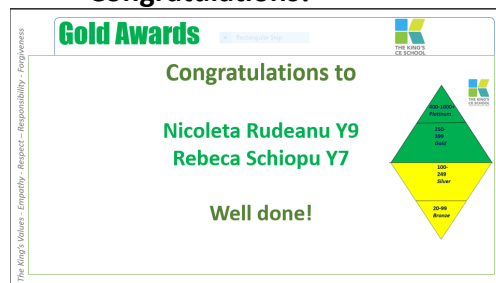
E-mail admin@kingswolverhampton.co.uk



kingswolverhampton

@kingsschoolwlv

Congratulations!



Crisis Careers Heroes

Each day a different field of work will be highlighted on the Website and Twitter. We want to thank all of these amazing Crisis Careers Heroes from the bottom of our hearts and help you learn more about the things they do in their jobs. please click [here](#) for further information.



The King's CE School

Aspire, Believe and Achieve Together



Newsletter 29 Friday 1st May 2020

Competition Time

Base 25, a charity which works with children, young people and their families in Wolverhampton are running an exciting "staying at home" themed competition which gives you the chance to win Amazon Vouchers! Information on what to do and how to enter is on the image below.

#ISTAYHOMEFOR **BASE25 WIN AMAZON VOUCHERS**

We're holding two competitions to engage the children and young people of Wolverhampton to join the campaign and create their very own #ISTAYHOMEFOR poster to display in your window.

There will be two separate competitions for under 12's and 13-18 year olds. 1st Place = £15 Amazon Voucher Runner-up (2nd) = £10 Amazon Voucher

Please Note: Wolverhampton residents only aged 18 and under.

TO ENTER: FOLLOW US ON OUR FACEBOOK (BASE 25) OR INSTAGRAM (BASE25_) - PARENTS CAN ON A CHILD'S BEHALF.

WHAT YOU NEED TO DO: CREATE A POSTER/PHOTO IMAGE/VIDEO IT MUST INCLUDE THE HASHTAG #BASE25 AND #ISTAYHOMEFOR > LIST THE REASONS WHY YOU STAY HOME DURING THE CURRENT OUTBREAK.

TIP: TRY AND BE CREATIVE, WE LOVE UNIQUE! > SEND YOUR CREATION TO: enquiries@base25.org

Please submit your entries by: **06/05/2020**. The winners of each competition will be announced on **08/05/2020**.

6th Form Newsletter

To see the latest 6th Form Newsletter from Dr Allen and 6th form tutors please [click here](#)



Contact Details

Telephone 01902 558333

Mr J Ludlow Principal

E-mail admin@kingswolverhampton.co.uk

KGT

The deadline for King's Got Talent applications has been extended! To upload your entry please [click here](#).



From the Chaplain....

This week we have been considering 'What are the basic truths that we believe in, that make us who we are?' In our reading this week, Paul writes to the church at Corinth reminding them that the truth of Christ's resurrection is central to who they are as Christians; because without that truth, if Christ hadn't conquered death, if we were not offered forgiveness for all our past wrongs, where would be our hope?

The Bible holds a history of God's relationship with humankind, and as we read it we can see the development of our understanding of God over the centuries, as more and more of his truth has been revealed to us. Sometimes that has meant that we have had to go back and question things which we had formerly held as immovable truths, in the light of the new truths revealed to us. Because of Jesus revealing God's merciful and patient love for every person he met; regardless of race, wealth or gender; we are caused to wonder at the Old Testament image of a God who at times seems so quick to anger and punish.

The way we are living today is so different to our lives even two months ago, and in this new context we are having to redefine what it means to be human and to be community. Let us be open to God revealing himself to us and to his guiding our relationships with one another in new and creative ways and let us keep our eyes open for the ways in which he will bless us this week.

Next Week's Theme for Worship:

Resurrection Appearances

Luke 24:13-35



At The King's CE School we believe that everyone is unique and created in God's image. We enable all to achieve their God-given potential; to grow, learn and aspire; to transform their lives and the lives of others and to journey in faith without limits within a unified, respectful and harmonious community.



[kingswolverhampton](#)

[@kingsschoolwlv](#)